

**50<sup>th</sup>** Anniversary  
*Antique Bottle and  
Collectables Show*

*1976*



*2026*

**September 11-13**  
**Claudlands Centre, Hamilton**

Hosted by *Auckland Historical Bottle & Collectables Club,*  
*The Association of New Zealand Antique Bottle*  
*& Collectable Clubs &*  
*Waikato Antique Bottle & Collectables Club*



# National Shows 1976 - 2026



1976 - Wellington	1993 - Hamilton	2010 - Christchurch
1977 - Nelson	1994 - New Plymouth	2011 - Auckland
1978 - Napier	1995 - Christchurch	2012 - Nelson
1979 - Christchurch	1996 - Wellington	2013 - Wellington
1980 - Auckland	1997 - Hamilton	2014 - Christchurch
1981 - Wellington	1998 - Gore	2015 - Hamilton
1982 - Napier	1999 - Nelson	2016 - Auckland
1983 - Nelson	2000 - Auckland	2017 - Nelson
1984 - Christchurch	2001 - Christchurch	2018 - Christchurch
1985 - Palmerston North	2002 - Palmerston North	2019 - Wellington
1986 - New Plymouth	2003 - Wellington	2020 - Tauranga
1987 - Dunedin	2004 - Nelson	2021 - No show due to Covid
1988 - Wellington	2005 - New Plymouth	2022 - Hamilton
1989 - Auckland	2006 - Christchurch	2023 - Christchurch
1990 - Christchurch	2007 - Auckland	2024 - Wellington
1991 - Wanganui	2008 - Dunedin	2025 - Dunedin
1992 - Nelson	2009 - Wellington	2026 - Hamilton



## Fifty Years of National Bottle & Collectable Shows: From Modest Beginnings to the Hobby's Premier Event



**Bruce Baldwin, who has attended 48 of the 50 National Bottle Shows, shares his perspective on the origins and continuing evolution of the hobby's annual event.**

It all began in Wellington in 1976. Before the first National Show, bottle collecting was carried out by enthusiasts scattered around the country, often corresponding by letter - provided they had an address - because toll calls were expensive in those days. Rumours circulated about collectors in other towns and cities, but no one knew for sure who collected what or where they lived.

Before the first National Show, only a handful of clubs existed - South Canterbury, Nelson, Southland, Wellington, and Christchurch - and collectors had limited contact outside their own areas. Some of the earliest contact was between collectors in Nelson and Wellington, and Australia's James Lerk, who travelled through New Zealand in the early 1970s, helped connect the community by meeting collectors and sharing names along the way.

For the first time in 1976, many of New Zealand's keenest collectors gathered in a room at the Wellington Show Buildings, where long-circulating rumours were finally confirmed or dismissed as people met and got to know one another.

In those early days, rarity didn't carry the weight it does today, and there were no price guides. Swapping was the preferred way to acquire bottles from other collectors. There were exceptions,



of course, but the buying-and-selling market we know today was in its infancy.

The Wellington Show, with its 20 categories and 70 entries, was groundbreaking and set the scene for the next 50 years. For those who attended, who could forget our first Aussie visitor, John Barker, complete with a heavy fur coat and looking every bit the international collector.

The next National Bottle Show was held in Nelson in 1977. There were 24 exhibitors, and the total number of entries more than doubled to 147. For many collectors, this was their first show, and a sizeable Australian contingent crossed the ditch, including well-known dealer David Westcott, Danny Drake, Bob and Sue Kiel, and Reg Moser. Our Australian friends have continued to support the National Shows ever since. The Nelson show

also marked a turning point in appreciating and understanding the rarity of bottles from different parts of the country.

In 1978, the Napier Bottle Club hosted a transformative show, featuring a record 250 entries - the highest number ever recorded for a National Show. It also introduced a new 'B' section for categories and, most significantly, marked the formation of a national body for the hobby. The surge in entries reflected a growing trend of collectors whittling down their personally dug collections to focus on high-quality bottles better suited to the categories at National and local shows.

By the early 1980s, the schedule had expanded to around 54 categories after extensive lobbying by collectors, interest groups and clubs. The quality of bottles and displays also improved, with rarity becoming a far more significant judging criterion than it had been previously. This shift had a major influence on the types of bottles collectors chose to exhibit.

A major innovation occurred at the 1989 National Show in Auckland with the introduction of a 'General Collectables' category. By 2000, the number of collectable categories had grown to 16 and now stands at 22, compared to the 49 bottle categories.

No National Show would be complete without the much-anticipated Friday night auction. While auctions had taken place during shows throughout the 1990s, the first dedicated Friday night auction was held on a rainy evening at the 2000 National Show in Auckland, organised by David Metcalfe. He continued running the auctions until 2004, when Kiwi Auctions, under Warren Roberts, took over. Many collectors regard the Friday night auction as one of the weekend's major highlights. Another favourite tradition is the Saturday night dinner and prize-giving, often hosted at the local RSA or a similar club.

Lastly, another significant development has been the decision for The Association of New Zealand Antique Bottle and Collectables Clubs to organise and underwrite the National Show, beginning in 2020. This initiative means local clubs no longer need to shoulder the full burden of manpower and finances to host a National Show. (This year, for example, the Auckland Club is co-hosting the event with support from the association). It's a major step forward for the hobby and helps ensure that National Shows will continue well into the future.

# Where It All Began: Wellington's Trailblazing 1976 National Bottle Show

**By Bernard Orsman**

'Wellington Show blazed a trail' was the headline in the first issue of the New Zealand Collectors magazine for the first 'Lion New Zealand National Bottle Show in 1976.

Collectors travelled from as far north as Whangārei and as far south as Tuatapere to attend the country's first bottle show at the Winter Show Buildings in John St - a venue built, coincidentally, over an early rubbish dump known as 'Jam Tin Gully'.

The show was more than a year in the making. In April 1975, the club's Ray Smith wrote to collectors, noting the rising interest in old and unusual bottles and suggesting that the time was right to stage a National Bottle Show.

Although no detailed planning had yet been done, he said the event would follow the model of overseas shows, with competitive categories, sales, and an informal conference.

"To be a success, the show would need strong support from people and clubs outside Wellington, and I'm writing now to ask for your reaction to the proposal," the letter said.

At the time, there were only four clubs in the country - South Canterbury, Nelson, Southland, and Wellington - but word spread quickly enough among collectors for the club to proceed. An organising committee was formed, comprising Ross Johnston, Gavin Smith, Brendan MacFarlane and me, with Ross Johnston serving as show convenor.

Collectors who attended included: Jack Anderson, Bruce Baldwin, Joe Bourke, David Burns, Len Bryant, Gail Cormack, Roger Dahm, Gavin Donaldson, Mr & Mrs Finlayson, Des Harris, Trevor Hosking, Ross & Sue Johnston, Ron & Di Judson, Olwyn and Len King, David Knight, Harley Land, Steve & June Light, Trevor Lownes, Brendan MacFarlane, Joffre Marshall, John Mottram, Bernard Orsman, Paul Orsman, Peter Orsman, Rob Packer, Alan Petrie, Steve Quinn, Doug & Joy Redmond, Chris & Ren Waring, Ross Williamson.

Those who attended the show will remember the bitterly cold Queen's Birthday weekend — and the rumour that the auction records were accidentally destroyed at the Saturday-night social when someone tossed them on the fire to keep warm.

There were about 70 entries in the 20 categories from 40 exhibitors at the small, upstairs hall. Judging was based on rarity, variety, condition, and eye appeal.

The Pilkington Trophy for best collection went to Rob Packer for his display of General Aerated Waters, while the Australian Bottle Review Trophy for the best New Zealand-found bottle was awarded to Des Harris for a free-blown Zara seal discovered on reclaimed land in Napier.

Des said: "It is free-blown and has a reannealed lip, which is a shear lip that has been re-heated during manufacture and rolled against a flat surface. This process sometimes caused swelling of the mouth, which is very apparent on this specimen."

The show finished with a convention, which decided to set up a national body to promote the hobby with a steering committee to report back to the second National Bottle Show in Nelson.

The article in the NZ Antique Bottle Collector declared the first National Show an "outstanding success", and the event has carried on every year, except 2021 due to Covid, and celebrates its 50th anniversary at Hamilton this year.

"Inevitably, lessons were learned from this venture, and future organisers would no doubt benefit from Wellington's pioneering experience. One clear takeaway was the need for a sufficiently large organising team. It is unfair and unwise to leave the load to a few willing horses," the magazine noted.

Decades on, National Shows are still largely dependent on a handful of horses.



THE WELLINGTON ANTIQUE  
BOTTLE CLUB  
PRESENTS



Open to the Public  
10am-5pm Sunday 6th June

**INTERNATIONAL LOUNGE**

WELLINGTON SHOW BUILDINGS

**WELLINGTON ~ 5th. 6th. 7th JUNE 1976**

FIRST PLACE

WORLD OF ANTIQUE BOTTLES AND POTTLIDS SHOW 1976

THE Wellington Antique Bottle Club Inc.

PRESENTS



THE LION NATIONAL ANTIQUE BOTTLE SHOW

INTERNATIONAL LOUNGE WELLINGTON SHOW BUILDINGS WELLINGTON, NEW ZEALAND 5th, 6th and 7th JUNE 1976

FIRST PLACE

WORLD OF ANTIQUE BOTTLES AND POTTLIDS SHOW 1976



The Lion National Antique Bottle Show New Zealand 1976

1st

PRIZE

Bitters and Gins

Category

Awarded to Bernard Orsman

Show Convener

*[Signature]*



The Lion National Antique Bottle Show New Zealand 1976

1st

PRIZE

Pots and Pottlids

Category

Awarded to Bernard Orsman

Show Convener

*[Signature]*

# Milk Wagon Souvenir

At the National Bottle Show in 1981, the late Trevor Morley came up with the brilliant idea of reproducing a toy milk wagon produced by 'Fun Ho' toys as a souvenir.

Trevor was the son-in-law of the late Jack Underwood, founder of the Underwood Engineering Co Ltd, which made 'Fun Ho' toys in the small Taranaki town of Inglewood.

The wagons were produced between 1948 and 1952, and 250 were cast for the show in aluminum from an original two-piece mould complete with water-applied transfers and a hand-inscribed number.

Trevor painstakingly numbered each wagon, which came with a certificate of authenticity.

Trevor was a stalwart of the club for many years and made a huge contribution in lots of little ways, notably TWAM's Trivia Test in Strike magazine. TWAM is the initials of his name - Trevor Walter Alexander Morley.

As a former policeman turned private investigator, Trevor collected police toys and memorabilia.





**The 21st National Bottle Show**, held in Wellington in 1996, featured photographs of the 18 collectors who had attended the very first show in 1976, along with a separate photo of the four collectors who had participated in every National up to that point. Although none of those four have gone on to attend all 50 shows, many of the 18 photographed in Wellington have remained regular participants over the years.

Back row (left to right): Steve Quinn, Bruce Kemp, Ross & Sue Johnston, John Mottram, Joy Redmond, Ron & Di Judson, Bernard Orsman, Des Harris, Harley Land, Rob Packer.

Front row (left to right): Len Bryant, David Burns, Doug Redmond, Bruce Baldwin, Chris & Ren Waring

Second photo  
Left to right: Harley Land, Ren & Chris Waring, Rob Packer.









# *Programme*



## *Friday 11th September*

- 2.00pm** Venue open for setting up
- 2.30pm** Kiwi Auctions Collectors Unreserved Auction viewing – Onsite
- 3.00pm** Collectors Auction Starts
- 4.00pm** National Live Auction Viewing – Onsite
- 5.30pm** Hall Closed to all
- 6.00pm** National Live Auction begins

## *Saturday 12th September*

- 7.00am** Hall is open for continuation of setting up
- 9.30am** Setting up to be completed
- 9.50am** Official opening
- 10.00am** Doors are open to the public
- 12.00pm** Venue open for collectors
- 1.00pm** Judging of exhibits commences
- 4.00pm** Hall Closed to the public
- 4.30pm** Hall closed to everyone


## *Sunday 13th September*

- 9.00am** Hall opens to all Collectors
- 9.30am** National Delegates - onsite
- 9.30am** Hall opens to the public
- 3.00pm** Hall closes to the public
- 3.00pm** Take down exhibits/Sales tables pack out
- 6.00pm** Hall to be clear of Exhibits & Sales Tables



*Auckland Historical Bottle & Collectables Club  
and The Association of New Zealand Antique  
Bottle & Collectable Clubs*

Welcomes you to the  
2026 National Antique Bottle & Collectables Show In Hamilton



- Show Convener** Chris Buchanan  
Tel 0274 730116  
Email [chris@mahutamanagement.co.nz](mailto:chris@mahutamanagement.co.nz)
- Show Secretary** Carmen Judson  
Tel 027 451 1781  
Email [staggers@xtra.co.nz](mailto:staggers@xtra.co.nz)
- Chief Judge** Allan Truman
- Entries** Entries close Friday 28th August 2026  
No late entries can be accepted without prior agreement from the Show Secretary.
- Sales/Displays** If you would like an alternative display or sales tables that don't fit into one of the listed categories, please contact the show convener.
- Overnight Security** Hall is locked and alarmed every night.  
The New Zealand Antique Bottle & Collectables Clubs Association accepts no responsibility for any loss or damage to items for the duration of the Show.
- Daytime Security** All show attendees will be honorary security.  
20 vests available to wear.
- Auction** Friday Auction – Kiwi Auctions will have an auction on the Friday evening Onsite, viewing from 4pm, Auction starts 6pm
- Saturday Dinner** Dinner & Prizegiving will be at Hamilton Workingmen's Club, 45 Commerce Street, Frankton.
- Refreshments** Onsite Cafe with food & beverages will be open all weekend.

*Auckland Historical Bottle & Collectables Club  
and The Association of New Zealand Antique  
Bottle & Collectable Clubs*

Welcomes you to the  
2026 National Antique Bottle & Collectables Show In Hamilton

		SECTION	
BOTTLE CATEGORY		A	B
1	<b>BLACK GLASS</b> <i>Plain/embossed/sealed/specialised or any combination</i>	15	9
2	<b>GINS</b> <i>Stoneware and/or glass</i>	15	9
3	<b>GLASS BITTERS / SARSAPARILLAS / WHISKIES / WINES / LIQUEURS</b> <i>Specialised and/or any combination</i>	12	7
4	<b>SCHNAPPS</b> <i>Stoneware and/or glass</i>	15	9
5	<b>CERAMIC WHISKY CONTAINERS</b> <i>Specialised and/or any combination</i>	15	9
6	<b>SYPHONS</b> <i>Any shape size and colour</i>	15	9
7	<b>NZ MARBLE STOPPERED BOTTLES</b> <i>Coloured tops and/or patents</i>	12	7
8	<b>NZ PICTORIAL MARBLE STOPPERED BOTTLES</b> <i>Upright with marble in neck, aqua and clear, coloured marbles permitted</i>	15	9
9	<b>NZ NON-PICTORIAL MARBLE STOPPERED BOTTLES</b> <i>Upright with marble in neck, aqua and clear, coloured marbles permitted</i>	15	9
10	<b>NZ INTERNAL THREADS</b> <i>Glass brewed and carbonated drinks only</i>	15	9
11	<b>NZ GENERAL AERATED WATERS</b> <i>Glass patents</i>	15	9
12	<b>NZ CROWN TOP AERATED WATERS</b>	15	9
13	<b>NZ LAMONTS</b>	15	9
14	<b>NZ HAMILTONS</b>	12	7

<b>BOTTLE CATEGORY</b>	<b>SECTION</b>	
	<b>A</b>	<b>B</b>
<b>15 NZ GINGER BEERS</b> <i>Stoneware and/or glass</i>	15	9
<b>16 NZ IMPRESSED GINGER BEERS</b>	12	7
<b>17 NZ CASUAL COOL DRINKS</b> <i>Any grouping of beers, cordials, aerated waters of all types, ginger beers, mineral waters, sarsaparillas (Ballins, CW Brodie and Mitchell's Sarsaparilla containers permitted)</i>	15	9
<b>18 NZ APPLIED CERAMIC LABELLED (ACL) BOTTLES</b> <i>Can include, Crown Tops, Milk Bottles, Flagons, Syphons etc</i>		
<b>19 NZ NON-PICTORIAL CROWN SEAL BEERS</b>	15	9
<b>20 NZ PICTORIAL CROWN SEAL BEERS</b>	15	9
<b>21 NZ BEERS OTHER CLOSURES</b> <i>Grey and Menzies, YY and Lanes Ring Seals are permitted.</i>	15	9
<b>22 COLOURED GLASS</b> <i>All one colour other than black or blue</i>	15	9
<b>23 BLUE GLASS</b> <i>Plain/Embossed/sealed/specialised or any combination</i>	15	9
<b>24 GENERAL MEDICINES/PHARMACEUTICAL/ POISONS</b> <i>Specialised or any combination. The maximum number of NZ items are 7 for Section A and 4 for Section B.</i>	15	9
<b>25 NZ CHEMIST BOTTLES</b> <i>Embossed and/or labelled, can include herbalists</i>	15	9
<b>26 PATENT MEDICINES/CURES/PROPRIETARY</b>	15	9
<b>27 GENERAL COLLECTION POT LIDS AND/OR POTS</b> <i>The maximum number of NZ items are 7 for Section A and 4 for Section B.</i>	15	9
<b>28 NZ POT LIDS AND/OR POTS</b>	10	5
<b>29 PERFUMES/SCENTS/TOILET WATERS</b> <i>Specialised or any combination</i>	15	9
<b>30 MINIATURES AND/OR SAMPLES</b> <i>Must be old</i>	15	9
<b>31 INKS &amp; GUMS</b> <i>Specialised or any combination</i>	15	9

<b>BOTTLE CATEGORY</b>	<b>SECTION</b>	
	<b>A</b>	<b>B</b>
<b>32 LABELLED BOTTLES/CONTAINERS/LIDS</b>	15	9
<b>33 GENERAL COLLECTION OF HOUSEHOLD CONTAINERS</b> <i>Pertaining to kitchen and/or pantry only. The maximum number of NZ items are 7 for Section A and 4 for Section B.</i>	15	9
<b>34 NZ HOUSEHOLD CONTAINERS</b> <i>Pertaining to kitchen and/or pantry only</i>	15	9
<b>35 FRUIT JARS PRESERVING TYPE</b> <i>Stoneware and/or glass</i>	15	9
<b>36 SALAD OILS/PICKLES/CONDIMENTS</b>	15	9
<b>37 CHINESE CONTAINERS</b>	15	9
<b>38 GENERAL COLLECTION OF OLD CONTAINERS</b> <i>The maximum number of NZ items are 7 for Section A and 4 for Section B.</i>	15	9
<b>39 COLLECTION OF NZ BRANDED CONTAINERS</b> <i>Glass and/or stoneware</i>	15	9
<b>40 COLLECTION OF CONTAINERS FROM ONE NZ TOWN/CITY OR DISTRICT</b>	15	9
<b>41 COLLECTION OF CONTAINERS FROM ONE MAKER OR USER</b>	15	9
<b>42 GENERAL COLLECTION STONEWARE</b> <i>Specialised and/or any combination. The maximum number of NZ items are 7 for Section A and 4 for Section B.</i>	15	9
<b>43 NZ STONE JARS AND CROCKS</b>	9	5
<b>44 FAVOURITE FIVE</b> <i>Five favourite containers of any kind</i>	5	
<b>45 ONE CONTAINER WITH ORIGINAL CONTENTS</b> <i>Must not be a previous winner.</i>	1	
<b>46 MISCELLANEOUS CONTAINERS</b> <i>This is reserved for unallocated collections which cannot be accommodated in any of the above categories.</i>	15	9

## BOTTLE CATEGORY

### 47 ONE CONTAINER WITH A SHORT WRITTEN HISTORY

*With permission of the author who retains copyright, a copy of this work will be held by the national body in its archives and may be displayed on its Internet site. May be part of a display. Must not be a previous winner.*

### 48 DETAILED RESEARCH ON NZ MAKERS AND/OR USERS (NON DISPLAY)

*Entry to be sent to show secretary one month prior to closing date, with permission of the author who retains copyright. Copy of the work will be held by the National Body in its archives, and may be displayed on its Internet site. Must not be a previous winner.*

### 49 MOST OUTSTANDING BOTTLE ON DISPLAY

*Must not be a previous winner at the last show.  
No entry fee if the bottle is included in another display.*



# Collectables Categories

## COLLECTABLE CATEGORY

### **50 NZ POTTERY**

Unstamped or unmarked pieces are permitted provided evidence or provenance to prove beyond reasonable doubt is included in the entry form to be passed onto the Judges for consideration.

Now includes outdoor items.

### **51 GENERAL COLLECTABLES**

A collection of interesting collectables of mixed and variable kinds.

### **52 NUMISMATICS AND EPHEMERA**

A collection of coins, medals, medallions, medallettes, tokens and badges. Ephemera items can include bank notes, postcards, trade cards, tickets, Posters, etc

### **53 ADVERTISING AND/OR PACKAGING**

A collection of items used for advertising of a product, service industry, sport or area, can include a collection of tins, packets, cartons, or boxes which contained consumable/usable items. (e.g. Cigarette tins, grocery packets etc)

### **54 GENERAL HOUSEHOLD AND/OR SPECIALISED HOUSEHOLD COLLECTABLES**

A general collection of household items which are or were normally found through the home. The home includes external amenity rooms, e.g. Toilet etc) If kitchen items form part of an exhibit in this category they must be less than 50%. A specialised collection of items relating to a room or theme is permitted (bathroom, bedroom etc).

### **55 A COLLECTION RELATING TO A NZ TOWN, CITY DISTRICT OR EVENT**

A collection of items manufactured or related to a single town, location, event or events of a common type. (e.g. NZ exhibitions, scenic ware etc)

### **56 CHILDHOOD DAYS – GENERAL AND/OR SPECIALISED**

A collection featuring playthings used by children in the home or garden.

### **57 GENERAL GLASS AND CHINA COLLECTABLES**

A general collection of mixed and varied glass or china or a combination of both, that does not constitute a specialised group. Items should be from more than one manufacturer. (e.g. Vaseline glass and ruby glass, Doulton and Carltonware etc)

### **58 METAL AND/ OR WOODEN COLLECTABLES**

Specialised and/or any combination

### **59 KITCHEN COLLECTABLES**

A mixed and varied collection confined to only kitchen items.

# Collectables Categories

## **60 SPECIALISED COLLECTION OF GLASS**

A specialised collection of glass to a single theme, era or manufacturer. These may contain material other than those listed if an integral and minor part of the item.

## **61 MID CENTURY COLLECTABLES**

Items from the 1950-60's

## **62 SPECIALISED COLLECTION OF CHINA**

A specialised collection of china, stoneware, porcelain etc to a single theme, era or manufacturer. These may contain material other than those listed if an integral and minor part of the item.

## **63 SPORT OR RECREATION**

A collection of items devoted to recreational pastimes. There is no restriction as to the materials forming these items which must have been capable of being used for the exhibit theme, the items exhibited in this section may have been used by either professional, or amateur, (e.g. Golf, photography, fishing, etc)

## **64 AUTOMOTIVE/TRANSPORT**

A collection devoted to those items associated with the automotive or transport industries.

## **65 FAVOURITE TEN**

Ten favourite collectables of any type.

## **66 THEMED COLLECTABLES**

This is reserved for unallocated collections which cannot be accommodated in any of the above categories.

## **67 COLLECTABLE WITH WRITTEN HISTORY**

## **68 JUNIOR COLLECTORS**

A collection of items formed and exhibited by a junior member, (either an individual or a family member) A junior member is one who has not reached their 16th birthday on the first day of the show. The generally old rule is not applicable to this category.

## **69 COLLECTABLE WITH ORIGINAL CONTENTS**

## **70 MINIATURES**

A collection of miniatures or trademans samples

## **71 MOST OUTSTANDING COLLECTABLE ON DISPLAY**

Must not be a previous winner.

## **72 CHAMPION OF CHAMPIONS (1.5m space)**

This is a non-competitive display for previous winners of Champion of Champions in any category. There is no limit on the number items in this display. The space allocated is 1.5m. All entries in this category will receive a special Champion of Champions certificate.



# *Trophies*



---

**Pilkington Trophy**

Best Overall Bottle Collection  
(judged by senior collectors)

---

**Premier Trophy**

Category 49

Bottle of the Show  
(judged by senior collectors)

---

**Otago Bottle Club Trophy**

Best Overall Collectable  
Collection  
(judged by senior collectors)

---

**Presidents Trophy**

Category 71

Collectable of the Show  
(judged by senior collectors)



# *National Rules*



1. The National Show shall be held any weekend during the year but preferably at Queen's Birthday weekend or Easter weekend.
2. No exhibitor may enter Section A and Section B in the same category, nor more than one entry per category, (bottle Categories only).

Entries in Collectables Categories may have more than one entry per exhibitor.

3. An exhibitor who has won in Section A cannot enter in Section B in that category.

4. All items in an exhibit must be the property of the exhibitor.

5. Exhibits to be allocated the following space.  
Favourite Five & Short Written History 700mm  
Single Item exhibits 500mm  
Bottle Categories 1 metre  
Collectable Categories 1.5 metre  
Favourite 10 Collectables 1 metre

All display stands and items to be within these limits.

**Note maximum height for any display is to be no higher/taller than 900mm off the tabletop.**

**Note please ensure your display covering drops to floor level (900mm from table to floor)**

Exhibitors should notify the host club about displaying large or heavy items in front of displays on the floor.

Items displayed on the floor are done so at the exhibitor's risk.

6. The host club & or National Association will provide adequate security throughout the show, but no responsibility will be undertaken by the host club or National Association for any loss or damage to exhibits or items on show.
7. Handling of exhibits during the show is prohibited.  
This also applies to judges.
8. All exhibits must remain on display until the end of the show. The Show Convenor can grant permission for exhibits to be removed early.
9. The winner of any Bottle Category in Section A or any Collectables Category who has won that category for three consecutive years will be awarded a Champion of Champions. Champion of Champions will not then be eligible to display in that category the following year  
Champion of Champions' winners may put in a non-competitive entry.



# National Rules

- 10.** A copy of written material for the category, Detailed Research on NZ Makers/Users must be sent to the Show Secretary, in an electronic format, at least one month before the National Show, and made available at the Show.
- 11.** All judging decisions are final.
- 12.** *Bottle categories will be judged on the following points system:*

Rarity	40 points
Variety	20 points
Condition	20 points
Display & Informations	20 points

*Collectable categories will be judged on the followings points system:*

Collectability	40 points
Condition	20 points
Information	20 points
Display	20 points
- 13.** Bottle of the Show winner or Collectable of the Show winner item cannot be entered the following year if won. Relates to Cat # 49 & 70, i.e. the winning item will not be eligible for display in this category the following year if it wins “one year stand down”
- 14.** The Show Convenor has the right to reallocate a display if it is considered to be in the wrong category. The exhibitor must be notified.
- 15.** The annual delegates meeting will be held during the show at a venue organised by the host club or National Association.
- 16.** Each club has the right to have two delegates to attend and vote at the meeting. Other collectors can attend, have speaking rights, but not voting rights.
- 17.** Remits for the delegates meeting must be in the hands of the National Secretary of the Association of New Zealand Antique Bottle & Collectables Club 12 weeks before the National Show to allow time to circulate to clubs. All remits must come through a club.
- 18.** The positions for the Association of New Zealand Antique Bottle & Collectables Club Executive will be elected by delegates at the Delegates meeting. The positions will be: National President, National Secretary, National Treasurer, Web Master, Electronic Records Custodian, Facebook Admin, club delegates and one delegate representing the host club for the following National Show, note these positions are for a 2-year term.

# National Judging Guide

## **RARITY**

This is in reality a very definitive concept yet one which is abused and not fully understood. How do you rate a one known item alongside a five known, or a five known alongside a ten known, etc? See National Rule no 12 for rarity ratings.

## **CONDITION**

This relates to the general condition of the exhibit. Is it mint, scratched, dirty etc? Judges should treat rarity and condition quite separately.

## **DISPLAY AND INFORMATION**

Eye appeal is a strong factor here. Has the collector made an effort to make the display attractive and to show the items to their best advantage? Cards with information about the item, rarity and a bit of history, etc. are essential. All bottles must be labelled and numbered. "Go-withs" can also improve a display. The best displays are often the most simple. After all, people are looking at the exhibits, not the display itself.

## **VARIETY**

Just as collection types vary, so do category types, to meet the many variations at shows. Variety is best defined as attempting to show a broad spectrum of bottles within a category, e.g. just South Island Ginger Beers. Judges have yet to decide whether this kind of specialization is acceptable and whether or not variety points should be deducted. However always consider the range of bottles within a category – glass/stoneware, size and shape, different types of bottles, (most important in general categories) colour, size, patent variety, pictorial and non-pictorial. Consider the following example for New Zealand Cods. Variety can be found in size (7oz, 10oz, and 26oz), colour (aqua, blue, green, coloured lips), patent variety (codd, hybrids, patent safe valve etc), pictorial early cods etc.





# *AUCKLAND HISTORICAL BOTTLE & COLLECTABLES CLUB INC- THE HISTORY.*



In 1976 and after Wellington club had a show, an advertisement was placed in the Herald asking for interested collectors to attend a meeting at the Ellen Melville Hall in Auckland city to discuss collecting old bottles.

The Warings, the Judsons, Dennis Kirk, and Harry Randall to name a few were amongst the attendees.

As a result of this initial meeting the first official meeting of the Auckland Historical Bottle Club was held on 13th September 1976 in the Ellen Melville Hall and was attended by 37 members.

The first President was one Russell Auld.

It transpired that many of those early collectors were digging on the Auckland tip and all became very good friends.

The club thrived and digging on sites was not like it is today so there were many bottles being found and swapped.

Club digs were organised and local shows were held to show off the bottles to the public. I am told one proved so popular that traffic jams ensued and the police arrived to try and move the public on who were trying to get in!

Notable digs and excursions included:

Rangitoto Island - Bottles were found thrown in the crater and in tomo's behind the bachs.

Kowhai School – A filled in disused quarry

Stanley St – The site of the Y-Y factory.

The club has seen many 'characters' over the years and much has been added by Auckland collectors to the history of Auckland. This culminated in the publishing of the book *Auckland Bottles 1840-1940*, a worthy reference book for every collector. The Auckland bottle book was a long time in the making. It was started by former president David Metcalf and picked up by the club after he died in 2006. Club president Chris Buchanan steered the mammoth project, working tirelessly to track down bottles, photograph and draw them, and piece together their histories, as well as edit the final edition.

Fast forward through to current times.

Our 40th birthday was celebrated at John Goodison's private museum in West Auckland and it was fitting that a cake was produced and cut by Ren Waring one of the founder members in 2016.

So here we are our 50th year. The club has survived and still has 30+ members every bit as keen as the first members but operating under different collecting conditions.

Many new bottles are still coming to light proving that you can still find



things if you are out there looking. Auckland bottles span more than 150 years, from the earliest years of European settlement. The ginger beers used by William Bacon, David Arthur and Robert Thompson, made by the Sydney potter, T. Field, date from the 1840s and are among the earliest branded bottles in New Zealand.

Another historical piece is the 'Gledhill's Patent', invented and registered by local aerated water company manufacturer George Gledhill in 1873 - a golden era of internally-stoppered mineral water patents.

Two of Auckland's most recognisable and sought-after bottles feature embossing of a 'Maori Chief' - the S. Gilbert, Chemist pot lids and the Native Mineral & Aerated Water Co. Ginger Beer, Codd and Soda Syphon bottles. Other notable bottles include the cobalt blue Y-Y crown cap and the beautifully embossed G. F. Moselen milk bottle from Grey Lynn.

In the chemist category, Auckland has by far New Zealand's largest number and widest range of embossed prescription bottles used by more than 80 chemists. There are 12 potlids and the likes of Graves Aickin, John Edson and J. Sharland used scores of bottles from ice blue examples in the 1870s to coloured and standard aqua bottles in the late 19th and early 20th centuries.

Happy hunting for the next 50 years.



Some of Auckland's Premier bottles.



# *KIWI AUCTIONS & THE NATIONAL SHOWS*



Warren Roberts & Laurie Thin (LWT) formed Kiwi Auctions in 1997 and with the help of close friends Neil Davis and Nigel Harrison the journey began - we were known as "The A Team".

Sadly LWT passed in 2002 & Nigel this year.

Kiwi Auctions association with the Nationals began in the early 2000s with support for David Metcalf who was running Auctions at the time for Bottles whilst we were running Auctions for Whiskey and Brewery memorabilia.

David passed away in 2004, his wish was we continue his legacy and start by selling his collection, that's where our foray into auctioning Bottles & Collectables began, and we've been hosting an auction with every National since 2004.

The business has expanded since my 'retirement' from the day job, we now conduct auctions not only for Antique Bottles - we now have specialist auctions for Automobilia, NZ Pottery, Vintage Toys, Antiques & Collectables and much more....A genuine Auction house for the Collector.

The early years saw the items arrive in on the day – unwrapped and placed on the table, hand written lot numbers applied, a clip board with hand written lot sheets, items sold, buyer name written down, reconciliation done on a spreadsheet and vendors paid by cheque or cash.

Today with the internet, it's online with real time bidding, lots of photos, and a push of a button to close the auction and advise our vendors and buyers what happened.

We have helped many families and collectors along our 29 year journey find new homes for their prized collections and in the process we have continually set records for New Zealand Bottles, below are some pictures and the prices for some of the special items that we have been privileged to auction.

We have financially supported every National during the 22 years of our partnership with the host clubs and latterly the National Body.

It's a real pleasure to provide this service for the collecting community of New Zealand and the world

Warren & Helen



**The A Team**

Left to right, Neil Davis, Nigel Harrison, Warren Roberts and Laurie Thin



L-R, T'O'Leary Green Codd, \$2780, Northern Steam Ship Filter \$9790, Moffett Codd Hybrid \$10900, Reeves Codd \$3375 Puddles Ginger Beer \$8900, Blue Bell Codd \$20025, Hutson Pottery 'Wahine' \$22250



Luke Adams Umbrella stand \$6675, Andrew Wilson Blob top \$2780, Reeves Dunedin Langley \$3890 John Stewart Blue Internal \$5159, Poswillo Jar \$4800, Thistle Whisky \$3750, Small Black Horse \$13500



Native GB \$10555, European Drug Pot Lid \$6920. Apothecary Jar \$3050, Buffalo Hunt Lid \$12900 Gilbert 'Maori' Chief Lid \$22300, Morley Jar \$5750, Native Auckland Green Syphon \$17600



Thomson Edwards \$11200, Blue Wai Wai Crown \$3750, Blue Patent Codd \$7050, McLachlan Blue Syphon \$7050 Fuller Amber Lip Codd \$3980, Crown Lynn Trickle Swan \$4800, Dodson 5 Gal Jar \$8200



Brunsell Internal Codd \$5860, Plowman 26oz Crown \$4700, Lee 'Pig' Codd \$4925, Johnson 'Rabbit' Codd \$5870 M. Roots ginger beer early GB \$6450, Wright Jar \$5860, Phillips Enamel \$4700

THE ELEVENTH NEW ZEALAND NATIONAL  
ANTIQUE BOTTLE SHOW

INCORPORATING  
AN ANTIQUE AND COLLECTORS FAIR

31 MAY - 1 JUNE

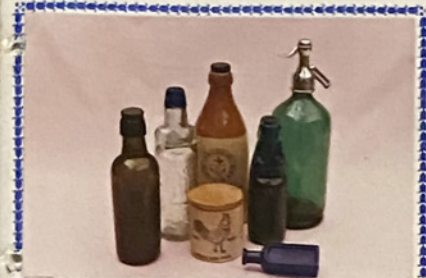
NEW PLYMOUTH

1986



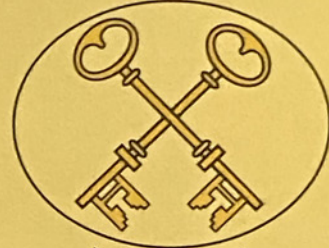
HOSTED BY: THE TARANAKI BOTTLE COLLECTORS CLUB.

SPONSORED BY   
THE 10th N.Z. NATIONAL  
ANTIQUE BOTTLE SHOW  
JUNE 1985



ANTIQUES & COLLECTORS  
FAIR  
PALMERSTON NORTH

21st



NATIONAL  
ANTIQUE BOTTLE  
& COLLECTABLES  
SHOW

WELLINGTON 1996

THE FIFTH NATIONAL  
BOTTLE SHOW



HOSTS:  
AUCKLAND HISTORICAL BOTTLE  
CLUB

VENUE:  
AUCKLAND RACECOURSE, ASH STREET,  
AUCKLAND

DATE:  
31 MAY, 1 & 2 JUNE, 1980

THE  
Wellington Antique  
Bottle Club Inc.

PRESENTS



THE LION NATIONAL  
ANTIQUE BOTTLE  
SHOW

INTERNATIONAL LOUNGE  
WELLINGTON SHOW BUILDINGS  
WELLINGTON, NEW ZEALAND  
5th, 6th and 7th JUNE 1976

THE N.Z. 8th  
NATIONAL  
ANTIQUE  
BOTTLE SHOW

QUEENS BIRTHDAY WEEKEND  
JUNE 3rd, 4th, 5th, 6th, 1983

TRAFALGAR CENTRE  
PARU PARU ROAD NELSON



TYRRE COLLECTION: NELSON PROVINCIAL MUSEUM

The Association of New Zealand Antique Bottle  
& Collectables Clubs is proud to host the:

48th National Antique Bottle  
and Collectables Show 2024

Marking the 50th Anniversary of the Wellington Club



Friday 20th Sept - Sunday 22nd Sept 2024  
Expressions Whirinaki  
836 Fergusson Drive, Upper Hutt

The Otago Antique Bottle & Collectables Club Inc  
is proud to be hosting the:

49th New Zealand National  
Antique Bottle & Collectables  
Show 2025



Friday 26th - Sunday 28th Sept 2025

Edgar Centre - More FM Arena  
116 Portsmouth Drive,  
Andersons Bay, Dunedin 9012

20TH NATIONAL  
ANTIQUE BOTTLE  
& COLLECTABLES  
SHOW

SPONSORED BY

CANTERBURY  
BREWERY

SINCE 1854



CHRISTCHURCH 1995